

# Solomon-Republican RAC Update

10/20/2020

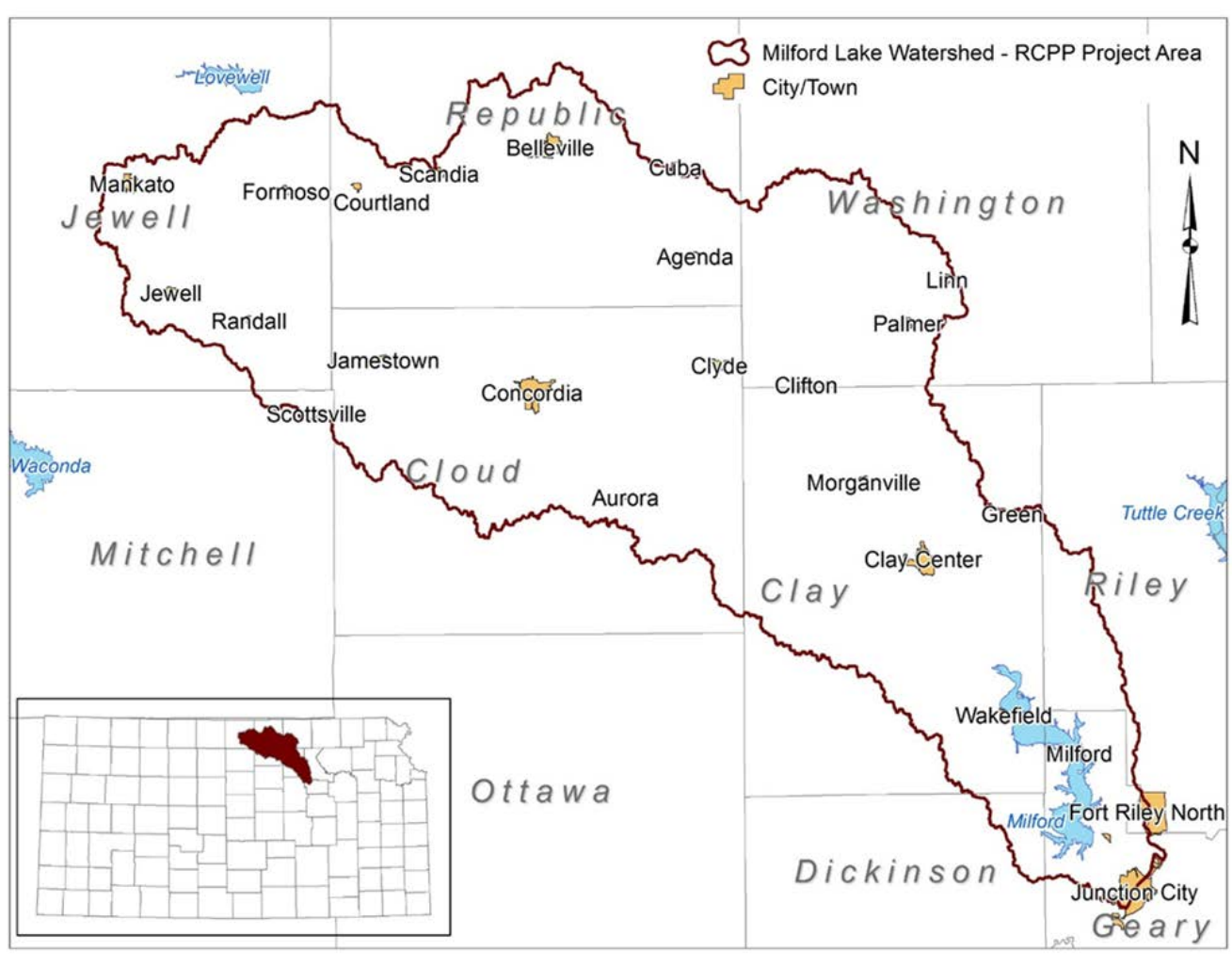
*Official Partner*

**MILFORD LAKE  
WATERSHED**

**REGIONAL CONSERVATION PARTNERSHIP PROGRAM**



# Milford Lake and Lower Republican Watershed



- U.S. Army Corps of Engineers Reservoir
- Federally Authorized Purposes:
  - Flood Control
  - Water Quality
  - Water Supply
  - Navigation (Missouri R.)
  - Recreation
  - Fish & Wildlife
- Estimated Current Capacity: ~370,000 af
- 15,700 surface acres
  - Largest Lake in KS
- Popular Fishing and Boating Lake in Kansas

Lower Rep. Watershed:  
1.25 million ac in size

Watershed largely rural  
~ 50% Cropland  
~ 37% Grassland

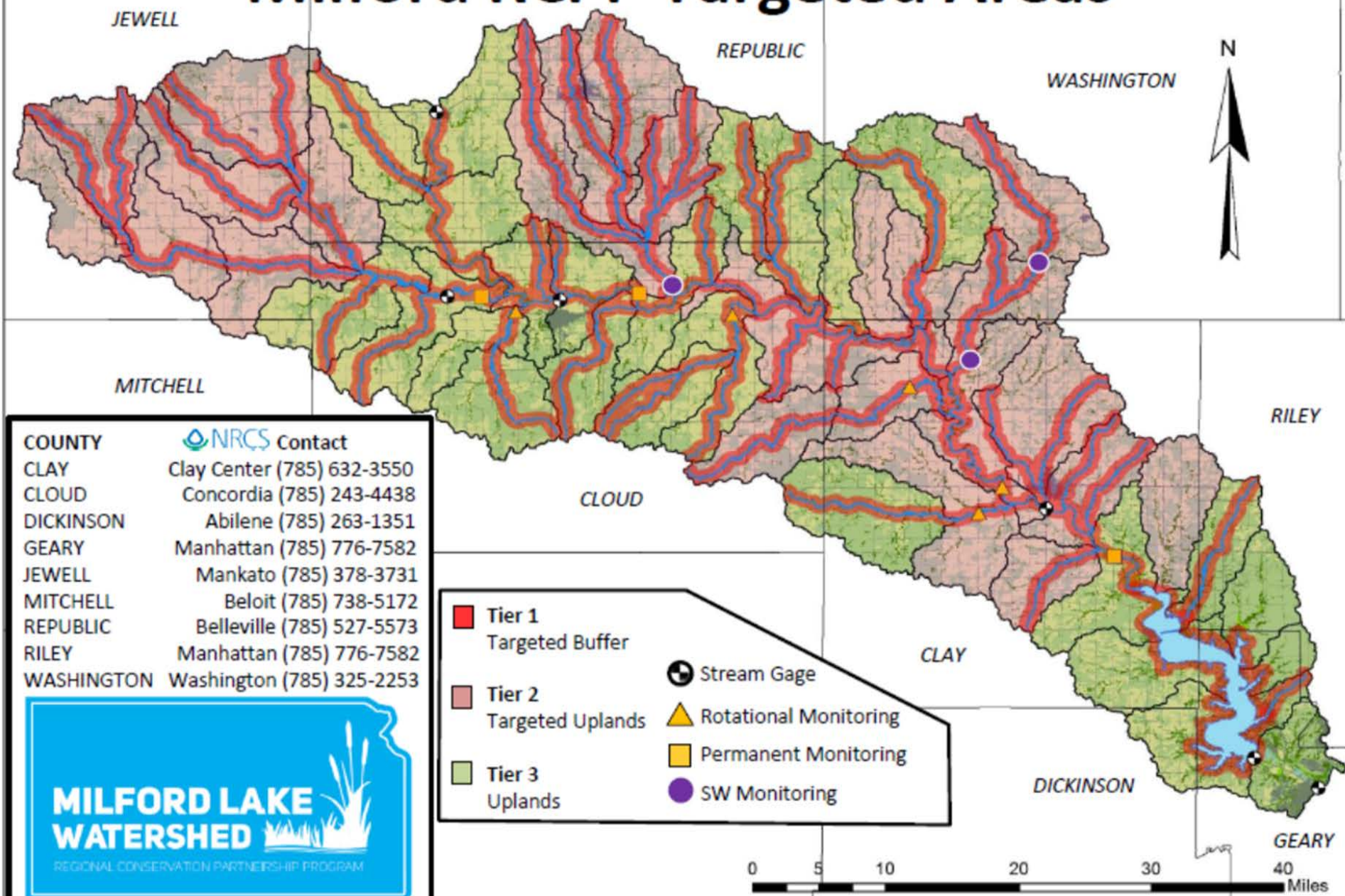
# Milford Lake Watershed RCPP

- Project Goal: Reduce watershed phosphorus loading by 31,000 lbs/yr contributing to the formation of HABs in Milford Lake.
  - Target based on reductions noted for Milford WRAPS Watershed Plan
- EQIP Funding for Eligible Practices
  - Cropland and Livestock focus
    - Core Practices (90% Program Payment Rate)
      - Comprehensive Nutrient Management Plan
      - Nutrient Management Plan
      - Nutrient Management
      - Fence
      - Cover Crop
      - Access Control
      - Watering Facility
      - Heavy Use Area
      - Residue and Tillage Management, Reduced Till or No-Till
    - Other Eligible Practices – 75% Program Payment Rate
- Signup incentive payments possible also for wildlife habitat creating practices through KDWPT Habitat First Program





# Milford RCPP Targeted Areas



The Milford Lake Watershed Regional Conservation Partnership Program (RCPP) is a partnership between the Kansas Water Office and regional entities as part of a collaborative effort to improve water quality in the Milford Lake Watershed.



Acorns Resort

City of Lawrence

City of Olathe

City of Topeka

City of Wakefield

Clay County Conservation District

Clay County Economic Development Group

Cloud County Conservation District

Dickinson County Conservation District

EcoPractices (Sustainability Partners)

Flagstop Resort & RV Park

Friends of the Kaw

Geary County Conservation District

Jewell County Conservation District

Kansas Alliance for Wetlands and Streams

Kansas Biological Survey

Kansas Corn Growers Association

Kansas Department of Agriculture - Division of Conservation

Kansas Department of Health and Environment

Kansas Department of Wildlife, Parks and Tourism

Kansas Farm Bureau

Kansas Forest Service

Kansas Soybean Commission

Kansas Water Office

National Sorghum Producers

Natural Resources Conservation Service

Republic County Conservation District

Riley County Conservation District

Sustainable Environmental Consultants

The Nature Conservancy

Thunderbird Marina & RV Resort

Washington County Conservation District

United States Department of Agriculture

WaterOne of Johnson County

Westar Energy

# Project Financial Update

Federal Fiscal Year	Total NRCS FA Obligation	NRCS FA Payments Made to Date	15% Stack Payment Obligation
2019	\$1,106,041.50	\$172,566.35	\$139,573.87
2020	\$129,160.00	\$0.00	\$10,461.60
<b>Total</b>	<b>\$1,235,201.50</b>	<b>\$172,566.35</b>	<b>\$150,035.47</b>
Project Total NRCS FA	\$2,159,992.00		
Total Project NRCS FA Obligated	57%		

# Project Implementation Update

Practice	Amount	Unit	Cost
340 - Cover Crop	994.6	Acres	\$62,611.16
342 - Critical Area Planting	7.3	Acres	\$1,204.42
362 - Diversion	882.0	Feet	\$2,021.19
512 - Forage and Biomass Planting	73.5	Acres	\$17,649.13
412 - Grassed Waterway	7.6	Acres	\$18,116.77
590 - Nutrient Management	1,881.5	Acres	\$54,809.73
378 - Pond	3	Number	\$4,900.74
600 - Terrace	7,981.0	Feet	\$11,253.21
<i>Total Reported Payments on Completed Practices:</i>			<i>\$172,566.35</i>





# WWW.MILFORDWATERSHED.ORG

← → ↻ 🏠 🔒 https://www.milfordwatershed.org/ ☆ ⌵ ⌵ ⌵ ⋮

MILFORD  
WATERSHED



# HELP FIGHT TOXIC ALGAE IN KANSAS

LEARN MORE ABOUT THE MILFORD WATERSHED RCPP



# S-R RAC Discussion

- Regional Goal/Action Plan Revision Update at July KWA Meeting
  - Feedback from KWA regarding inclusion/recognition of efforts to benefit Milford Lake within S-R regional goals/action plans
- Question for S-R RAC: With nearly half of Milford RCPP project area within S-R, is there RAC interest in additional goal/action plan language to address feedback from KWA?