

KANSAS CONSERVATION DISTRICTS

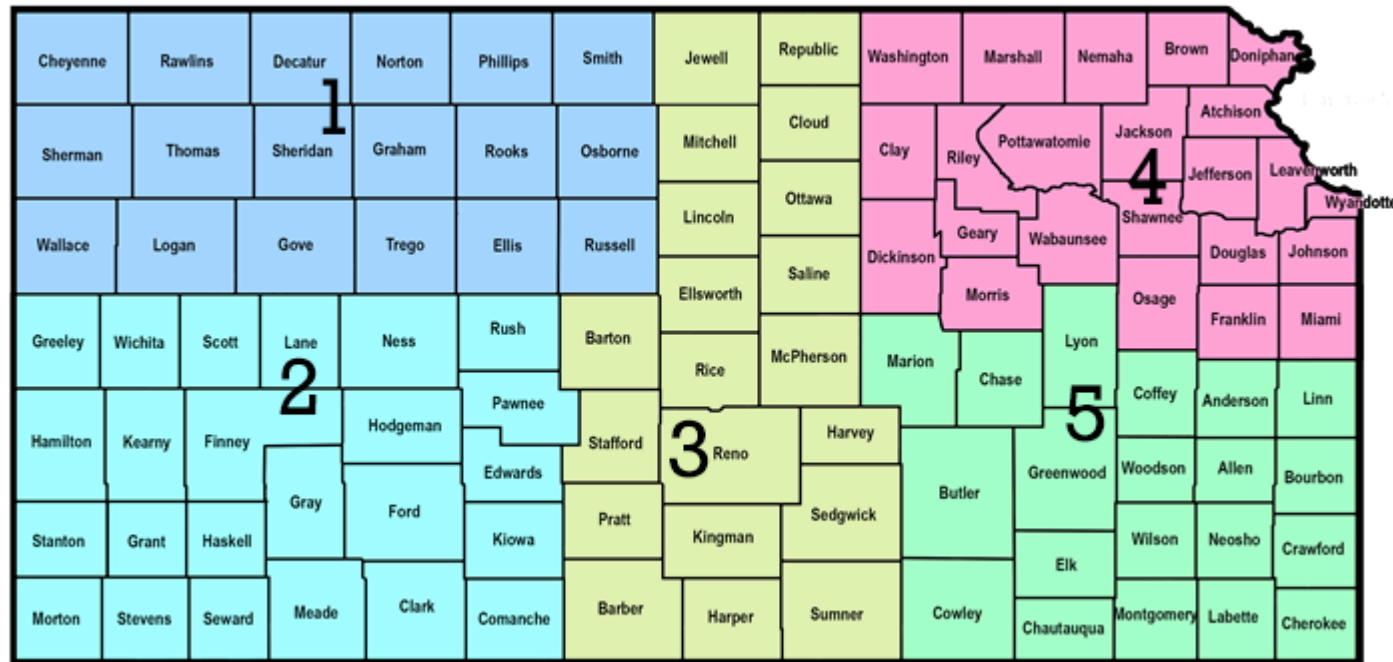
Dan Meyerhoff, Executive Director
Kansas Association of Conservation Districts

Our Mission Statement

“Providing local leadership to protect and improve Kansas Natural Resources through collaboration, education and implementation”

Who We Are

- 105 Conservation Districts
- 525 Volunteer District Supervisors
- 102 District Managers and 9 Administrative Support Positions
- 44 Technical Support Positions



District Priorities

- Delivery of local financial & technical assistance
- Reduction of sedimentation, nutrient, & pesticide run-off
- Water quality protection & restoration in streams & above reservoirs
- Protection & sustainability of the Ogallala & related aquifers
- Promote conservation practices that improve soil health

Conservation Districts are the primary local unit of government responsible for the conservation of soil, water and related natural resources within the county boundary

Local Delivery System for Many Conservation Programs

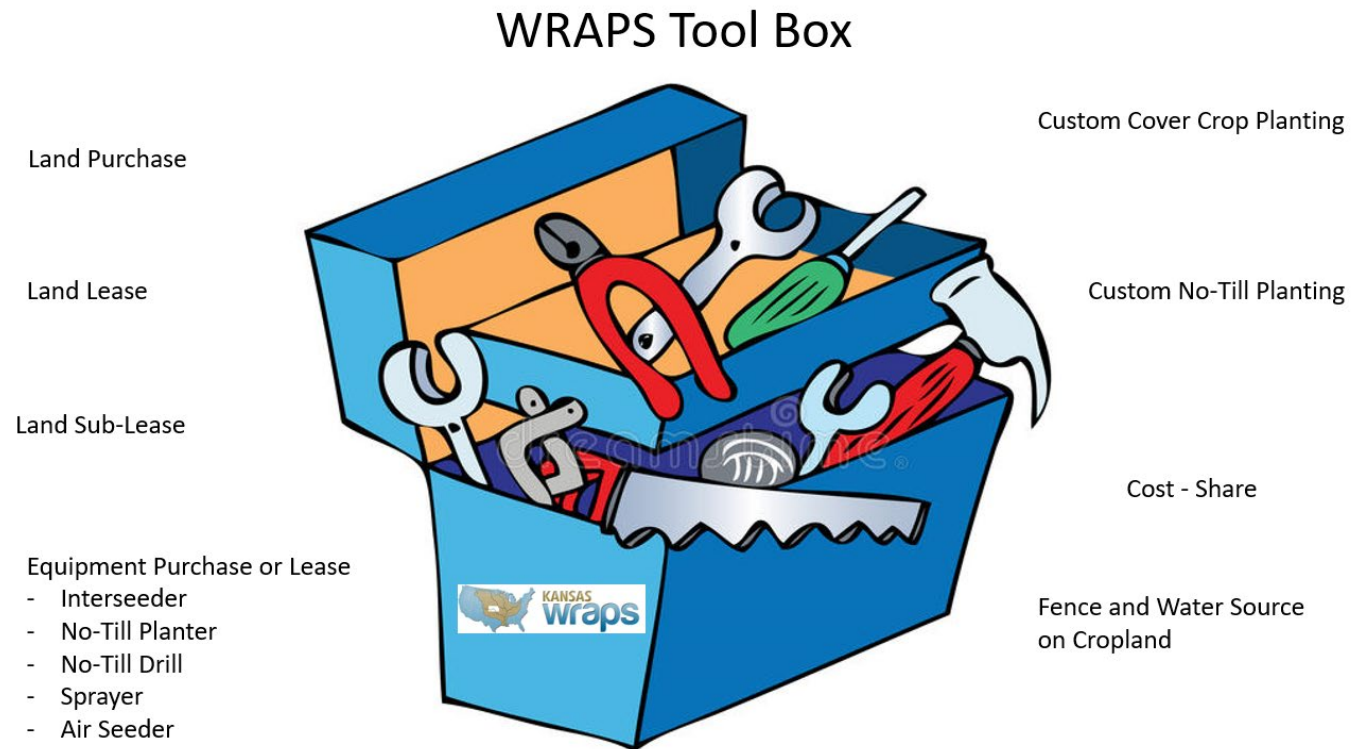
- Water Resources Cost Share Program
- Non-Point Source Pollution Control Program
- Riparian and Wetland Program
- Irrigation Technology
- Kansas Reservoir Protection Initiative
- Kansas WRAPS

What is WRAPS

- A framework that engages citizens and other stakeholders in a teamwork environment aimed at protecting and restoring Kansas watershed for surface water quality.
- A key strategy for the Kansas Nonpoint Source Pollution Strategy
 - **WRAPS**
 - **LEPP (Local Environmental Protection Program)**
 - **DWP (Drinking Water Protection)**
 - **401 Water Quality Certification**



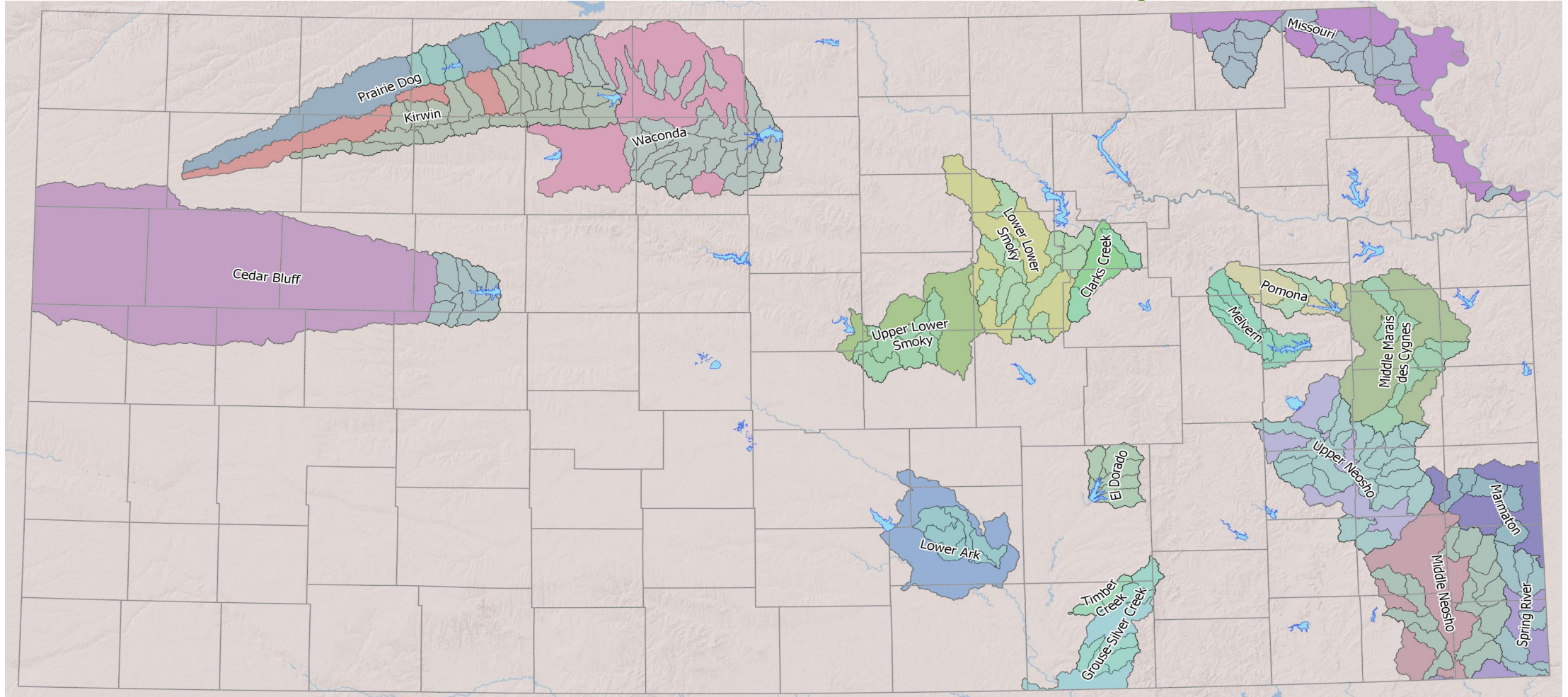
- WRAPS utilizes local, federal and state resources to provide funding at the local level to implement watershed plans
 - Water Quality Goal and Sources of Pollution
 - Watershed Needs (what's the problem)
 - Efficiency and Cost Effective BMPs
 - Targeted Subwatersheds
 - Short, Mid and Long Term Milestones



What is the KACD-WRAPS Partnership Grant?

- Historically, individual grants to each WRAPS project.
- Resource needs to delist impaired waters required reorganization of the WRAPS program
- Creation of “Active” WRAPS and the KACD-WRAPS “Partnership” Grant

Who is in the KACD-WRAPs Partnership Grant?



- BMP cost-share efficiency
 - \$30 per pound of phosphorus (not to exceed 100% of project cost)
- BMP types and locations
 - Based on watershed plans

	A	B	C	D	E	F	G	H	I	J	K	L	M	N	O	
5	Enter the units value in the light blue boxes. In the cropland area, the unit type will change, depending on the practice and what it requires for the calculation. The gray box below this field is a conversion of your input from acres installed to acres affected, etc. providing you with a way to cross-reference and verify the amount implemented.															
6	Cropland/Ag Field and Filter Strip											AGFIELD RESULTS		203.0	101.6	81.6
7												LOAD REDUCTION		N	P	S
8	Upper_Neosho	<input type="button" value="Clear"/>	Practice	<input type="text" value="Permanent Vegetation"/>												
9			Enter Acres Applied	<input type="text" value="40.0"/>												
10	Available Crop Practices															
11	Conservation Crop Rotation															
12	Cover Crop	Enter values only in the light blue box above. The gray box below is a conversion of your input from acres installed to acres affected, or vice versa.														
13	Field Border/Vegetative Buffer															
14	Grassed Waterway															
15	Nutrient Management (Cropland)															
16	Permanent Vegetation															
17	Residue Management/Long-Term															
18	Terrace															
19																
20																
21																
22																
23																
24																
25																
26																

Upper_Neosho_Counties	<input type="text" value="Neosho"/>	Calc Ready
HUC 12	<input type="text" value="110702040206"/>	Upper_Neosho_HUC_crop
Targeted practice types	Cropland	
Targeted impairments	Sediment, Nutrient	

Calculation Description:			
Sets USLE values to "Croplandcultivated" before treatment; Sets USLE values to "Pasture" for C and P in "after"			
NOTE: Contributing acres refers specifically to the direct drainage contributing to the practice. It is not necessarily synonymous with the field size, nor should it include drainages upland of the field, etc.			
Cost-share @ \$30/lb		\$3,046.94	

Partnership Grant Results

- Grants:

- Year 1
 - April 2019-December 2020
 - \$300,000 BMPs
 - Total Phosphorus Reduction = 18,140 lbs (\$13.66 per pound)
- Year 2
 - April 2020-December 2021
 - \$300,000 BMPs
 - Total Phosphorus Reduction = 16,884 lbs (\$19.87 per pound)
- Year 3
 - April 2021-December 2022
 - \$250,000 BMPs
 - Total Phosphorus Reduction = Being Calculated
- Year 4
 - April 2022-December 2023
 - \$250,000 BMPs

Assist With USDA Farm Bill Program Delivery

- Environmental Quality Incentive Program (EQIP)
- Conservation Stewardship Program (CSP)
- Agricultural Conservation Easement Program (ACEP)
- Regional Conservation Partnership Program (RCPP)

Conservation Districts provide administrative support and technical support to assist with contract implementation

Collaborating With Partners

- Federal Agencies – NRCS, FSA, USFWS
- State Agencies – KDA, KWO, KDHE, K-State Extension, KDWPT, KFS
- State Conservation Commission (SCC)
- KWA – Regional Advisory Committees
- Watershed Districts
- Groundwater Management Districts
- County Commissions and local Health Departments
- Tribal Governments
- NGO's – DU, PF, PLJV, TNC, KACEE, KFAC
- And others

Youth Information and Education



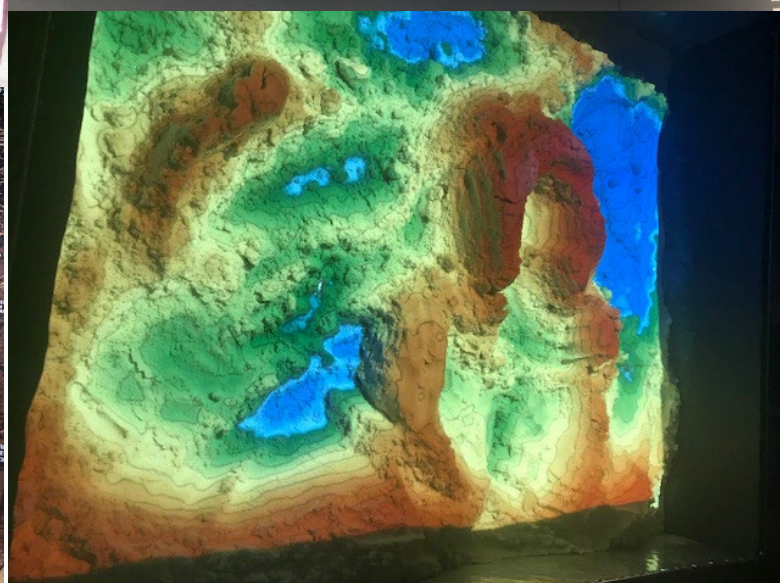
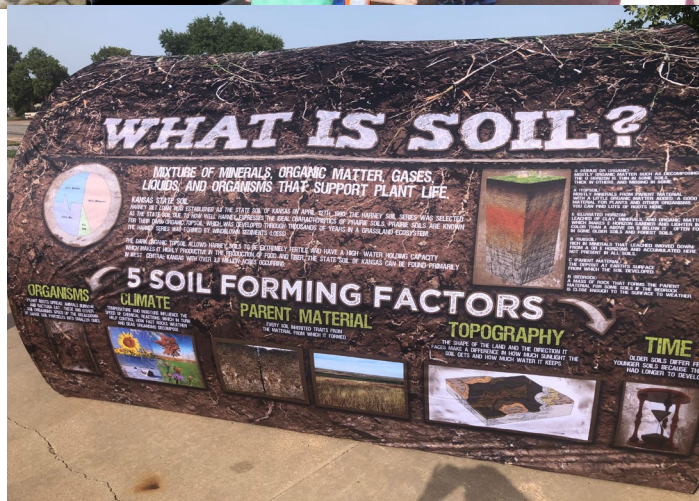
Providing local leadership to protect and improve Kansas Natural Resources through collaboration, education and implementation

Adult Information and Education



Providing local leadership to protect and improve Kansas Natural Resources through collaboration, education and implementation

Educational Tools



Providing local leadership to protect and improve Kansas Natural Resources through collaboration, education and implementation

Local Work Groups

- USDA Farm Bill Responsibility to Conduct local work group meetings
- Membership Comprised of:
 - Federal and State Agency staff
 - CD boards, FSA County Committees, Extension Service
 - Commodity groups, Farm Organizations
 - Ag Business
 - Local Farmers and Ranchers
 - Tribal Governments
 - General Public

Local Work Groups

- Purpose:
 - Develop Conservation Needs Assessment
 - Identify Priority Resource Concerns
 - Identify Educational and Producer Training Needs
 - Make Program Recommendations

Thank you For Your Time and Attention

Questions?

Dan Meyerhoff, Executive Director
Kansas Association of Conservation Districts
(785)650-1330 kacd@eaglecom.net
www.kacdnet.org