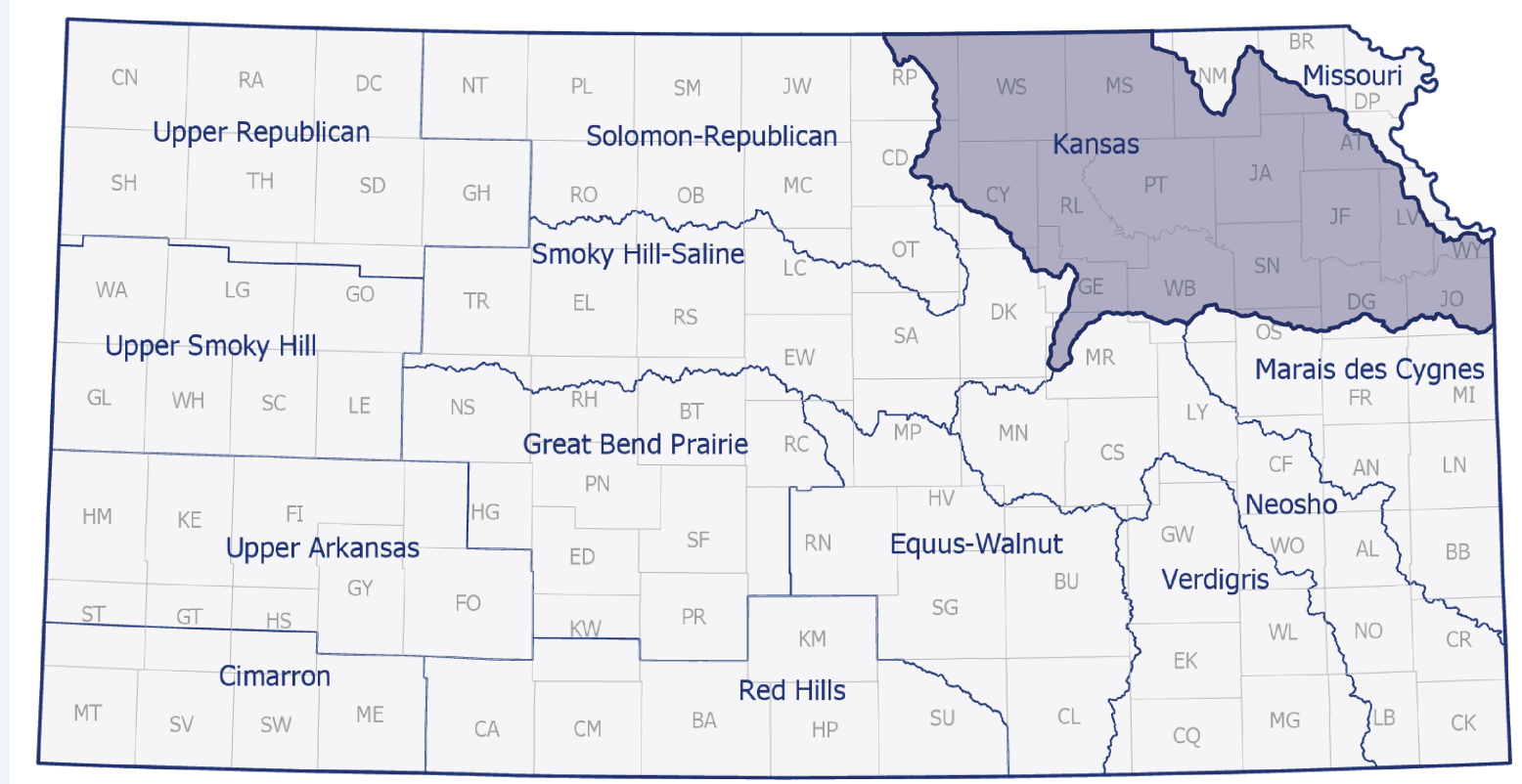
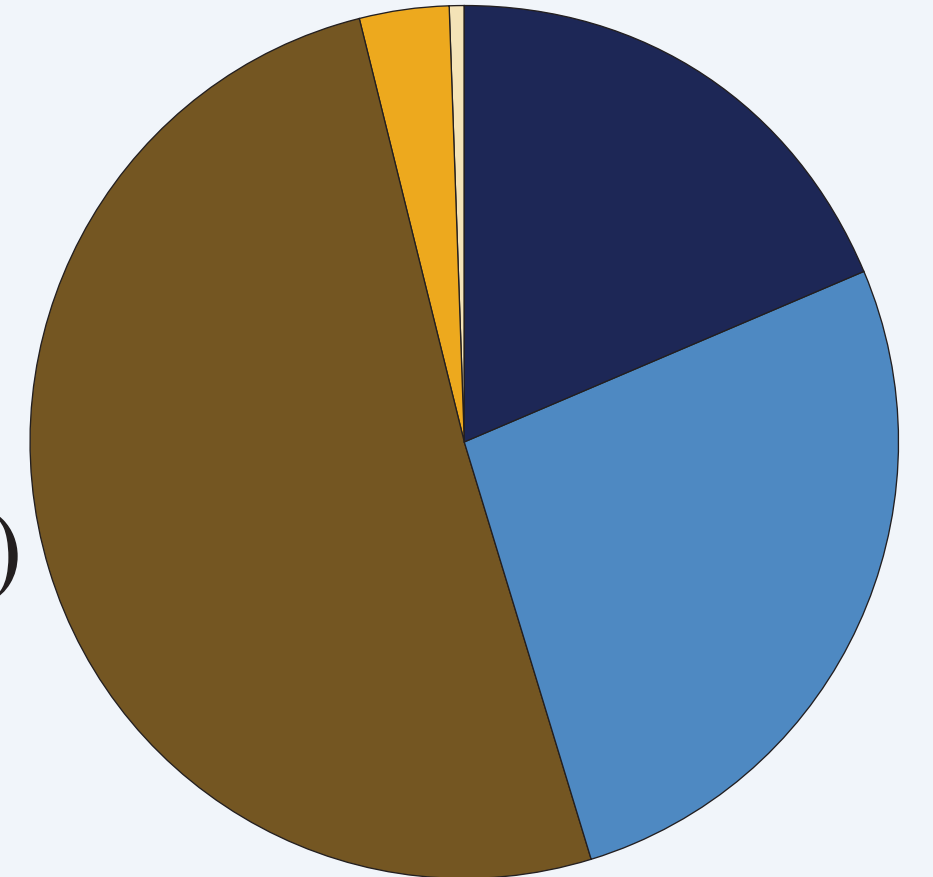
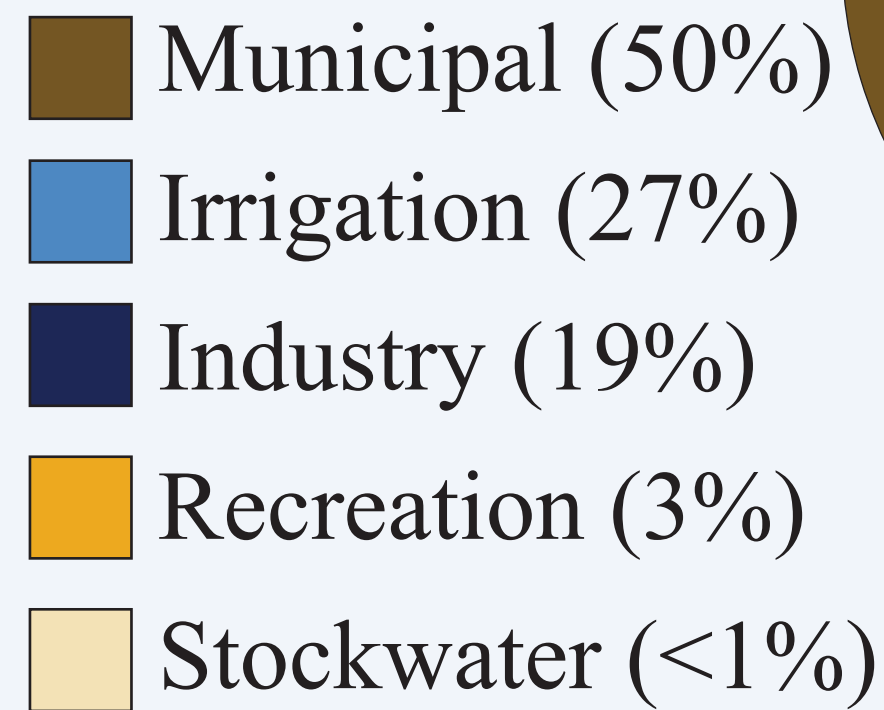


# KANSAS

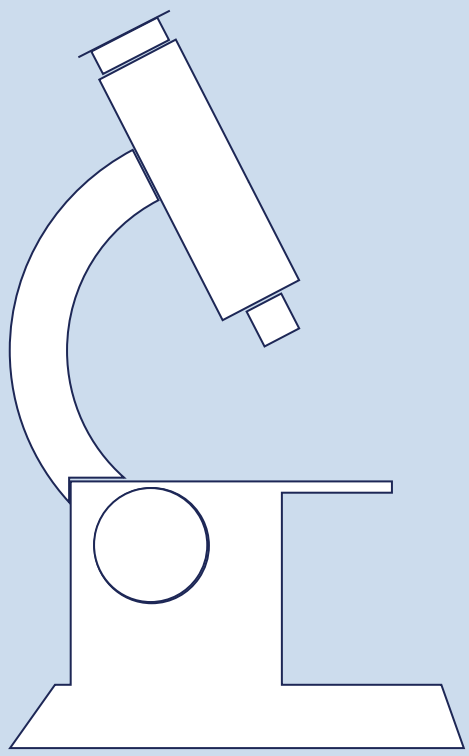
## Regional Planning Area



### Water Use:



Average water use, 2015-2019



Kansas River  
reservoir Flood and  
Sediment Study is  
**underway.**

Tuttle Creek Lake  
has historically  
lost over 3,800  
acre-feet of  
storage a year.

**47%**  
**of total**  
**storage**

Basin supply will be  
**insufficient**  
to meet projected demands  
through a 1950's  
type drought by:



The Milford Lake Regional  
Conservation Partnership  
Program has been renewed  
for another **five years.**



Streambank stabilization  
projects continue to be  
located, designed and  
constructed.



KWO Planner - Amelia Nill  
[amelia.nill@kwo.ks.gov](mailto:amelia.nill@kwo.ks.gov)