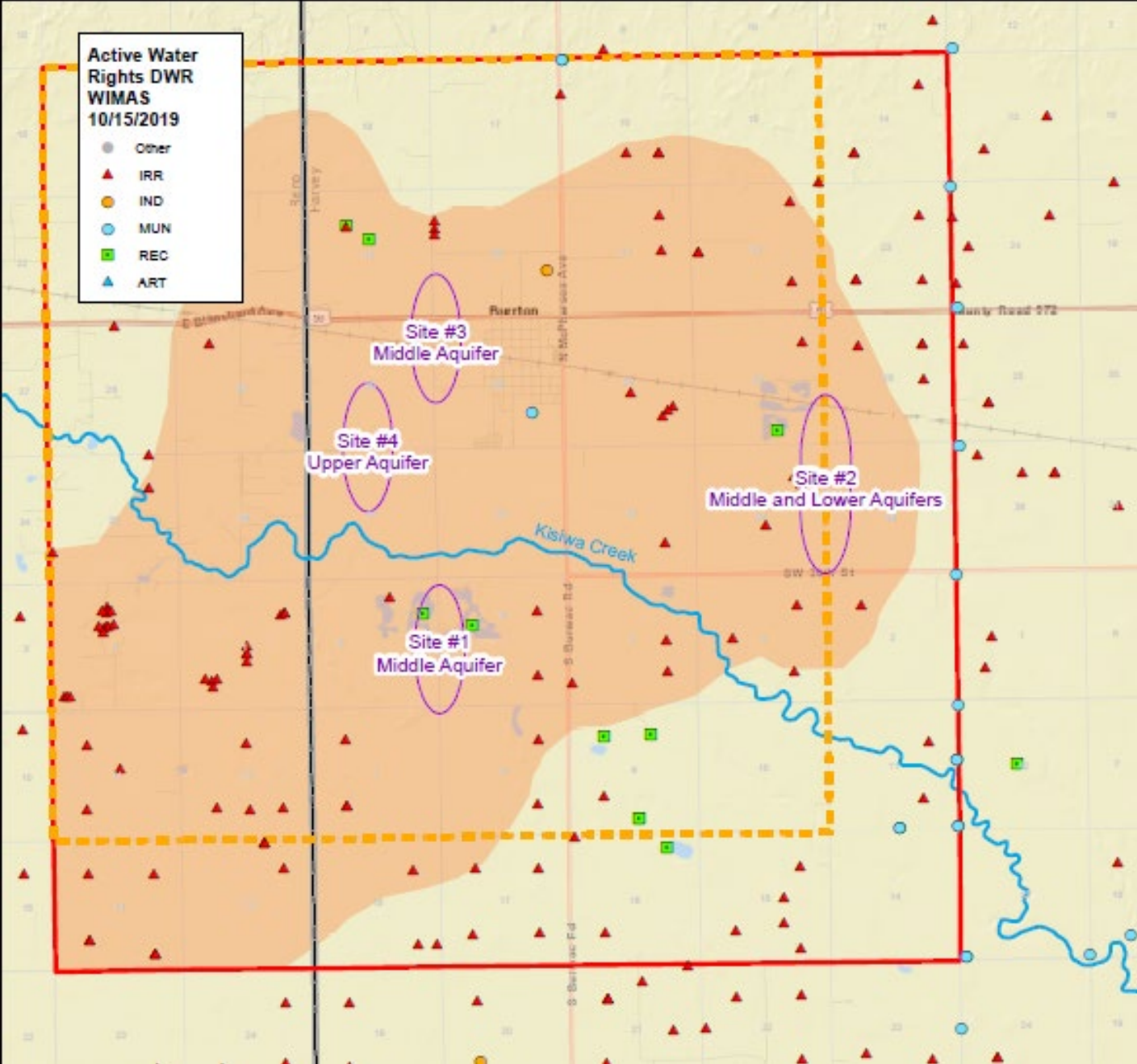


Water Authority Input on the Burrton Oil Field Brine Plume Report

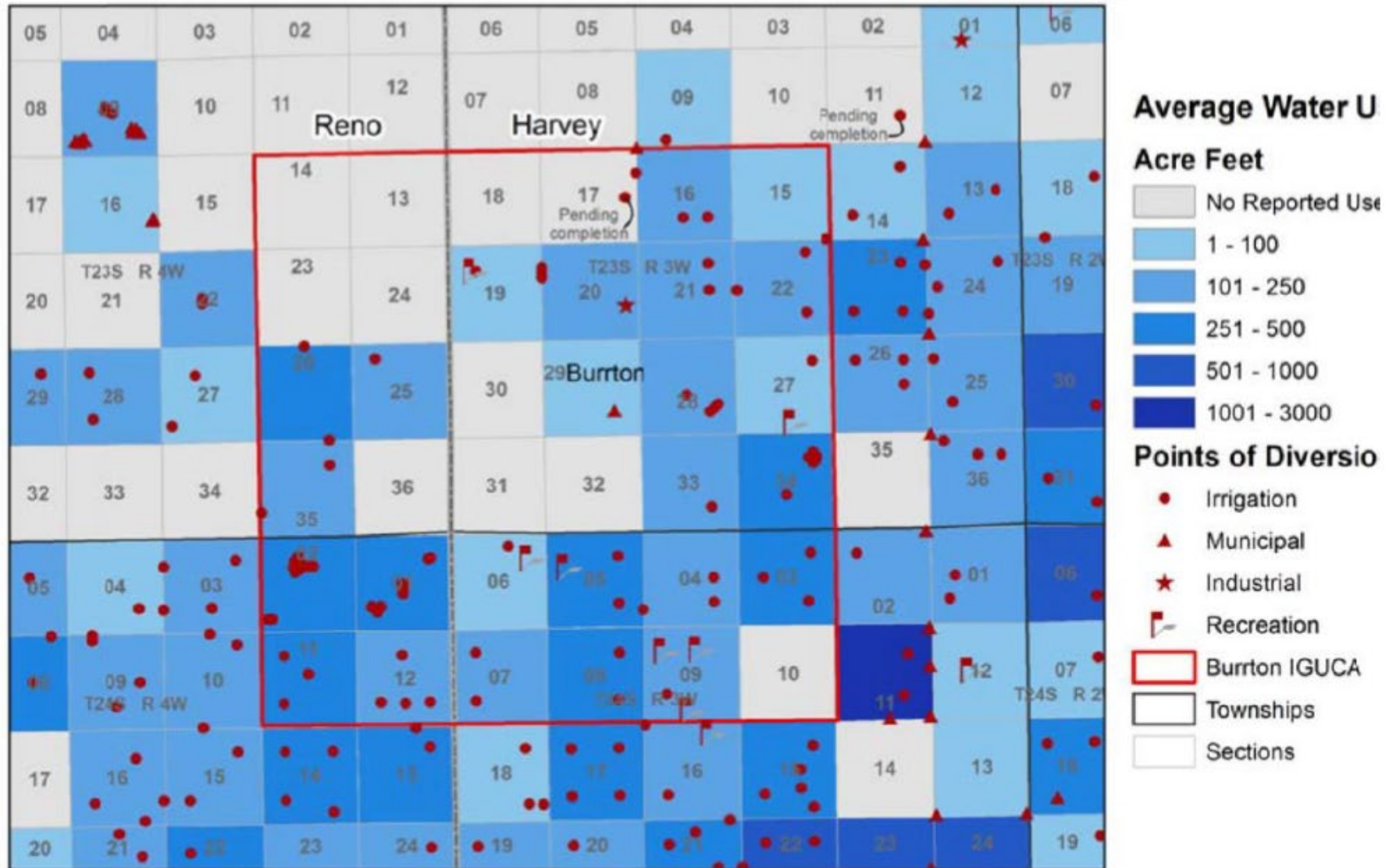


Active Water Rights DWR WIMAS 10/15/2019

- Other
- IRR
- IND
- MUN
- REC
- ART



2005-2014 Average Annual Reported Groundwater Use by Section



Note: Average 2005-2014 use for each PD summed by section. The two PDs pending completion have not reported use yet. Effects of pumping on adjacent sections not considered.



Kansas Department of Agriculture
Division of Water Resources
October 14, 2015

Recommended next steps

Identified in

Burrton Oil Field Brine Plume Report:

- Water quality flow data
- Hydrogeologic investigation
- Identify funding sources and operating partners
- Acquisition of property and easements
- Installation of monitoring wells at selected site
- Expansion of GMD 2 monitoring well network
- Water quality testing